
User's Guide



Saint Gobain ISOVER (Finland) Template Instructions

Document revision 2017-02-14

MagiCAD® Copyright © 1998-2017 Progman Oy. All rights reserved.

MagiCAD is a registered trademark of Progman Oy.

AutoCAD is a registered trademark of Autodesk Inc.

Windows is a registered trademark of Microsoft Corporation.

All other product names are trademarks of their respective holders.

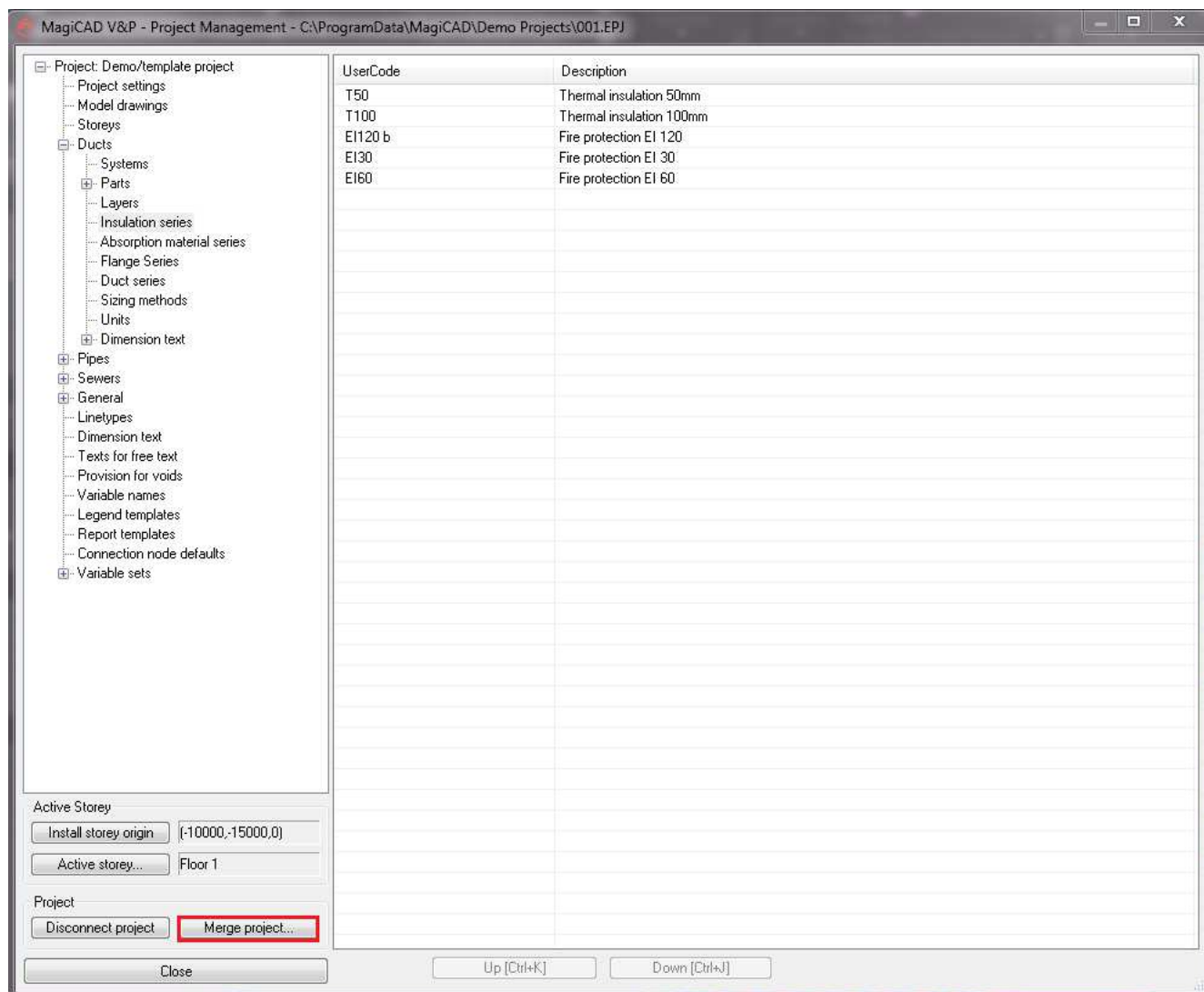
PROGMAN OY
www.progman.fi

Saint Gobain ISOVER template

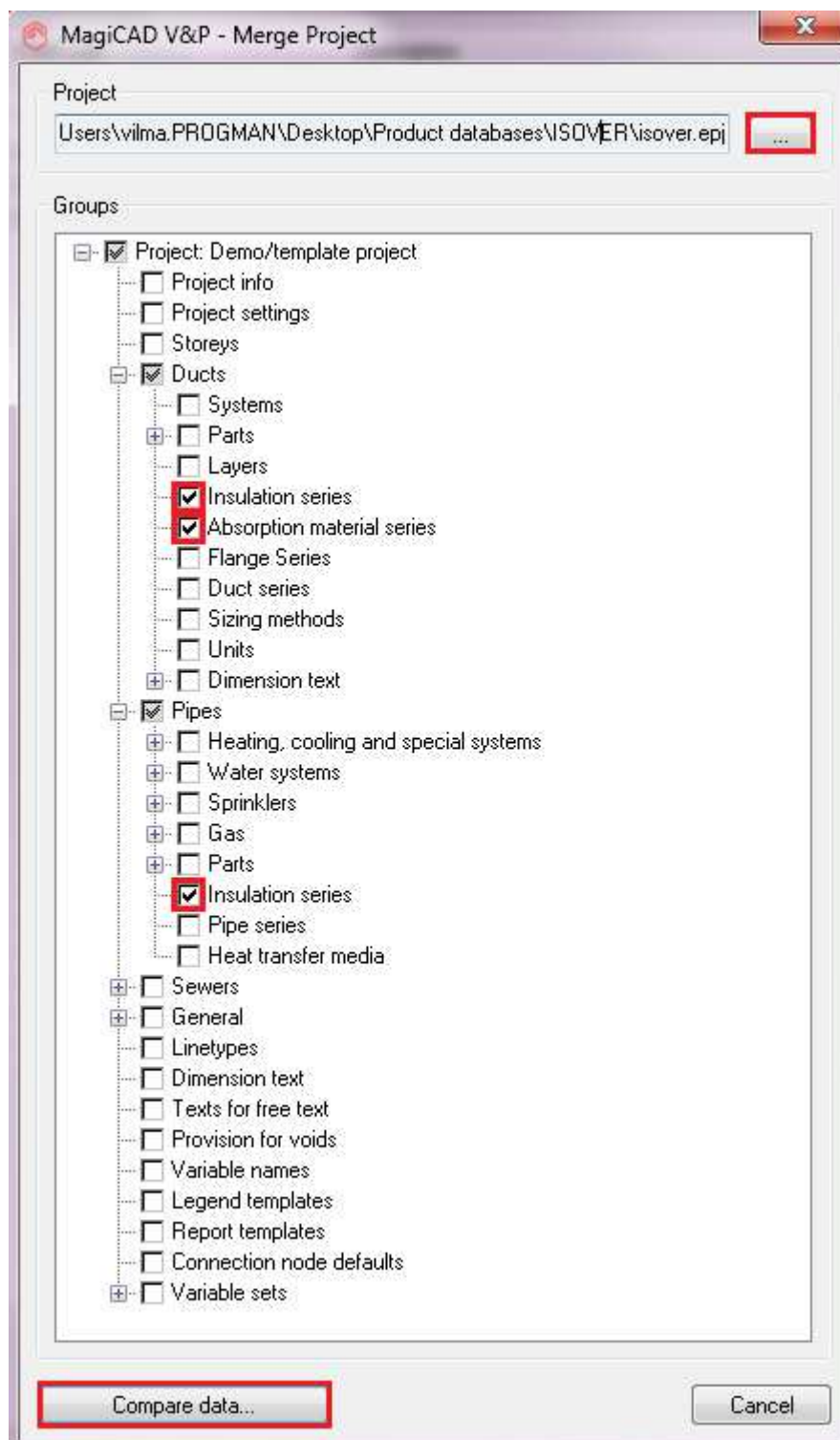
Taking the template into use

Download the .zip file to your computer. Unzip the file to a suitable location.

Start MagiCAD, open the project management window, and choose *Merge project...* button



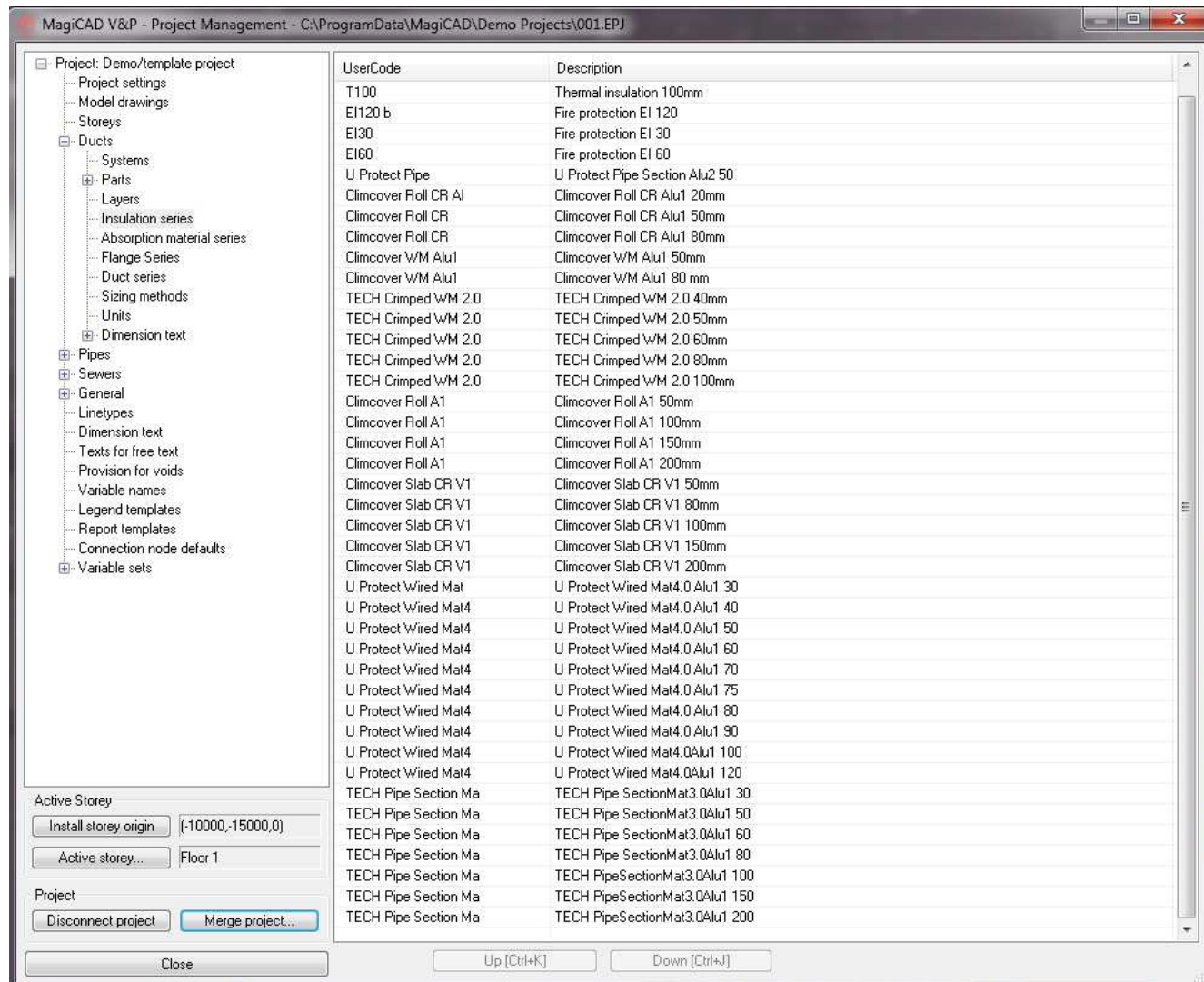
In the opened window choose the project (.EPJ file) from where you have saved it. Choose duct *Insulation series* and *Absorption material series* under the Ducts group and pipe *Insulation series* under Pipes group. Choose Compare data...

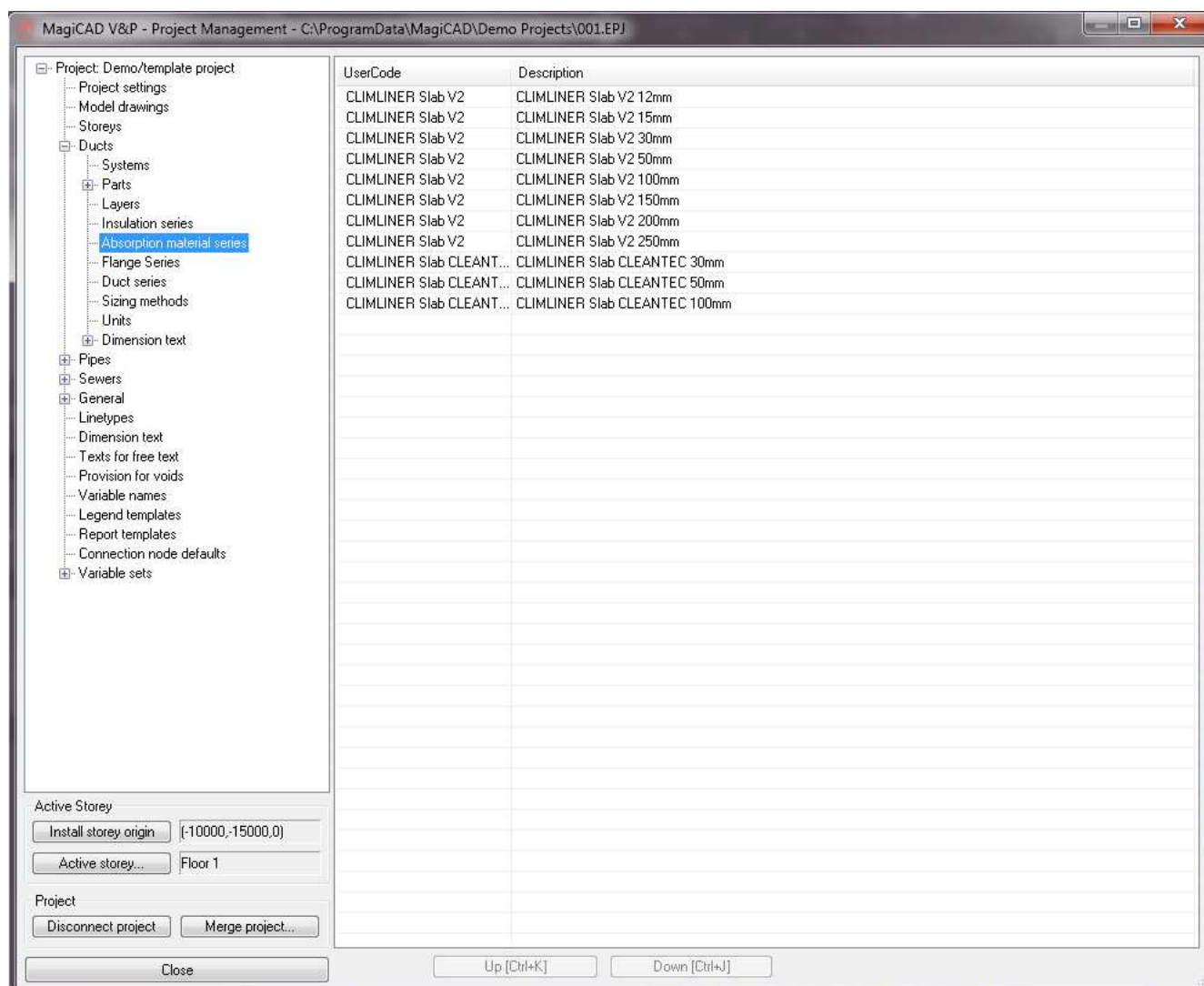


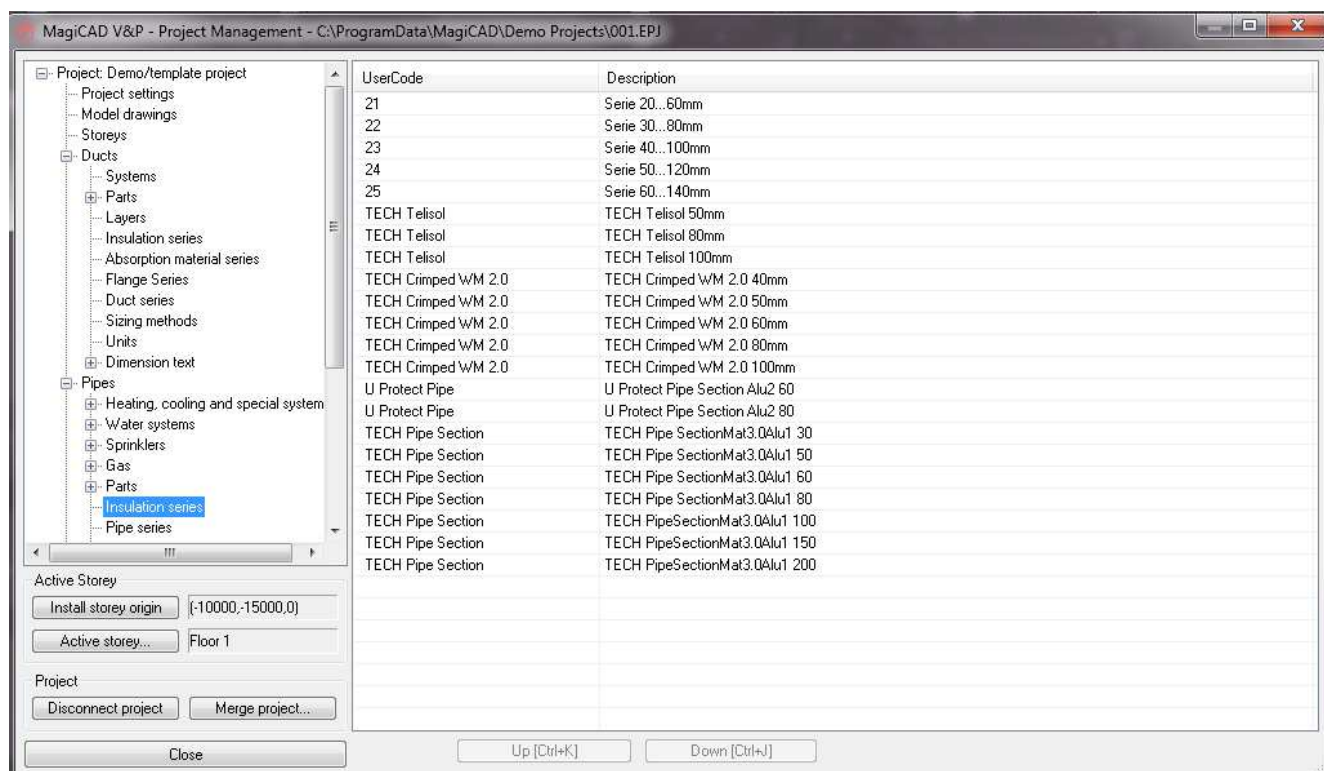
In the opened window you can see all *Insulation series* and *Absorption material series* that will be added to the current project. Choose *OK – Merge* button.

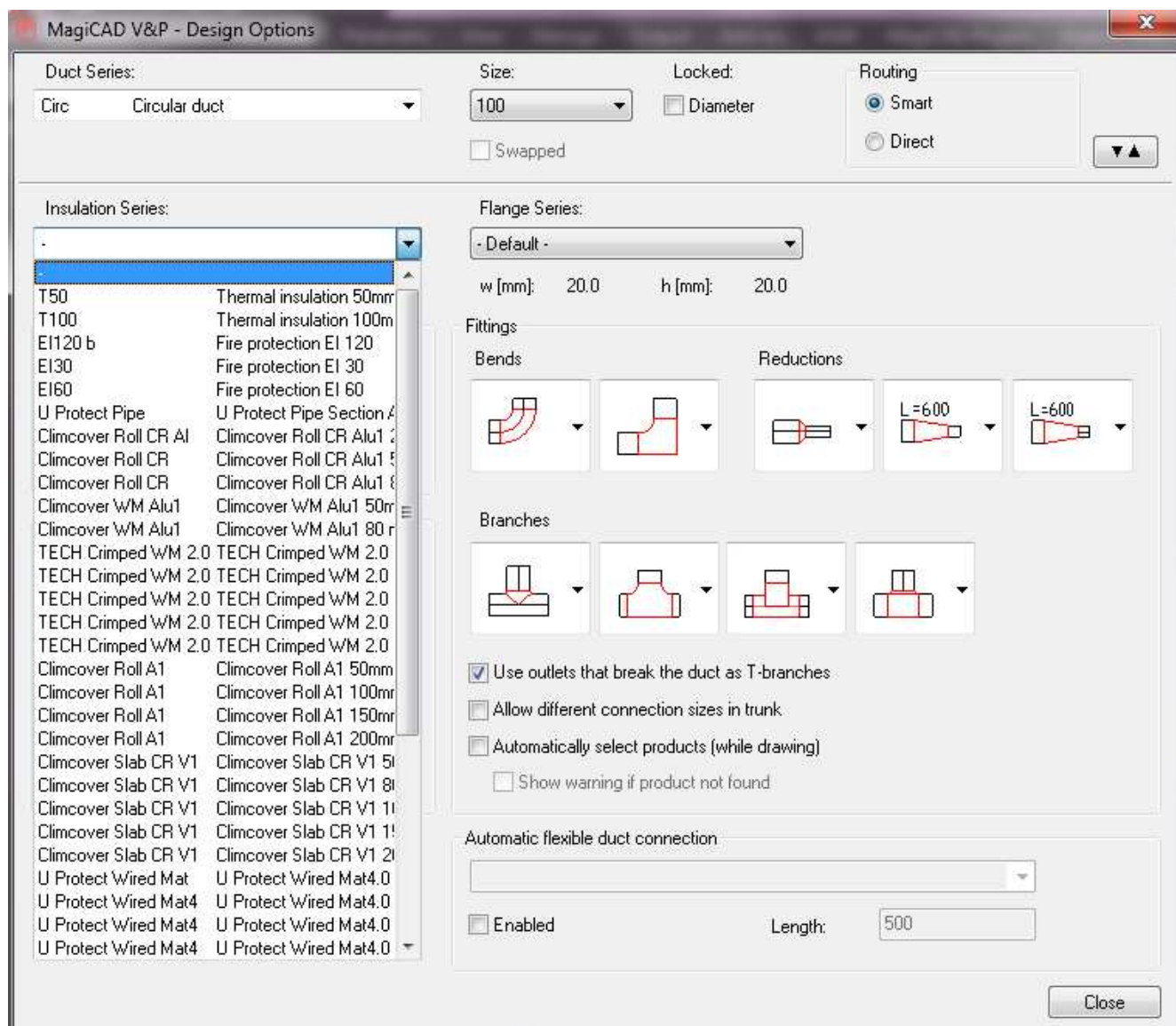
MagiCAD V&P - Merge Project						
Group	Id	Code	Description	Status	Differences	Operation
Ducts/Insulation ...	000022	TECH Crimped ...	TECH Crimped ...	Does not exist		Create new (000...
Ducts/Insulation ...	000023	TECH Crimped ...	TECH Crimped ...	Does not exist		Create new (000...
Ducts/Insulation ...	000024	Climcover Roll A1	Climcover Roll A...	Does not exist		Create new (000...
Ducts/Insulation ...	000025	Climcover Roll A1	Climcover Roll A...	Does not exist		Create new (000...
Ducts/Insulation ...	000026	Climcover Roll A1	Climcover Roll A...	Does not exist		Create new (000...
Ducts/Insulation ...	000027	Climcover Roll A1	Climcover Roll A...	Does not exist		Create new (000...
Ducts/Insulation ...	000028	Climcover Slab ...	Climcover Slab ...	Does not exist		Create new (000...
Ducts/Insulation ...	000029	Climcover Slab ...	Climcover Slab ...	Does not exist		Create new (000...
Ducts/Insulation ...	000030	Climcover Slab ...	Climcover Slab ...	Does not exist		Create new (000...
Ducts/Insulation ...	000031	Climcover Slab ...	Climcover Slab ...	Does not exist		Create new (000...
Ducts/Insulation ...	000032	Climcover Slab ...	Climcover Slab ...	Does not exist		Create new (000...
Ducts/Insulation ...	000033	U Protect Wired ...	U Protect Wired ...	Does not exist		Create new (000...
Ducts/Insulation ...	000034	U Protect Wired ...	U Protect Wired ...	Does not exist		Create new (000...
Ducts/Insulation ...	000035	U Protect Wired ...	U Protect Wired ...	Does not exist		Create new (000...
Ducts/Insulation ...	000036	U Protect Wired ...	U Protect Wired ...	Does not exist		Create new (000...
Ducts/Insulation ...	000037	U Protect Wired ...	U Protect Wired ...	Does not exist		Create new (000...
Ducts/Insulation ...	000038	U Protect Wired ...	U Protect Wired ...	Does not exist		Create new (000...
Ducts/Insulation ...	000039	U Protect Wired ...	U Protect Wired ...	Does not exist		Create new (000...
Ducts/Insulation ...	000040	U Protect Wired ...	U Protect Wired ...	Does not exist		Create new (000...
Ducts/Insulation ...	000041	U Protect Wired ...	U Protect Wired ...	Does not exist		Create new (000...
Ducts/Insulation ...	000042	U Protect Wired ...	U Protect Wired ...	Does not exist		Create new (000...
Ducts/Insulation ...	000052	TECH Pipe Sect...	TECH Pipe Sect...	Does not exist		Create new (000...
Ducts/Insulation ...	000053	TECH Pipe Sect...	TECH Pipe Sect...	Does not exist		Create new (000...
Ducts/Insulation ...	000054	TECH Pipe Sect...	TECH Pipe Sect...	Does not exist		Create new (000...
Ducts/Insulation ...	000055	TECH Pipe Sect...	TECH Pipe Sect...	Does not exist		Create new (000...
Ducts/Insulation ...	000056	TECH Pipe Sect...	TECH PipeSecti...	Does not exist		Create new (000...
Ducts/Insulation ...	000057	TECH Pipe Sect...	TECH PipeSecti...	Does not exist		Create new (000...
Ducts/Insulation ...	000058	TECH Pipe Sect...	TECH PipeSecti...	Does not exist		Create new (000...
Ducts/Absorption...	000001	CLIMLINER Sla...	CLIMLINER Sla...	Does not exist		Create new (000...
Ducts/Absorption...	000002	CLIMLINER Sla...	CLIMLINER Sla...	Does not exist		Create new (000...
Ducts/Absorption...	000003	CLIMLINER Sla...	CLIMLINER Sla...	Does not exist		Create new (000...
Ducts/Absorption...	000004	CLIMLINER Sla...	CLIMLINER Sla...	Does not exist		Create new (000...
Ducts/Absorption...	000005	CLIMLINER Sla...	CLIMLINER Sla...	Does not exist		Create new (000...
Ducts/Absorption...	000006	CLIMLINER Sla...	CLIMLINER Sla...	Does not exist		Create new (000...
Ducts/Absorption...	000007	CLIMLINER Sla...	CLIMLINER Sla...	Does not exist		Create new (000...
Ducts/Absorption...	000008	CLIMLINER Sla...	CLIMLINER Sla...	Does not exist		Create new (000...
Ducts/Absorption...	000009	CLIMLINER Sla...	CLIMLINER Sla...	Does not exist		Create new (000...
<div> <div>Ok - Merge</div> <div>Cancel</div> </div>						

New series are added to the current project file and can be used in the drawing.





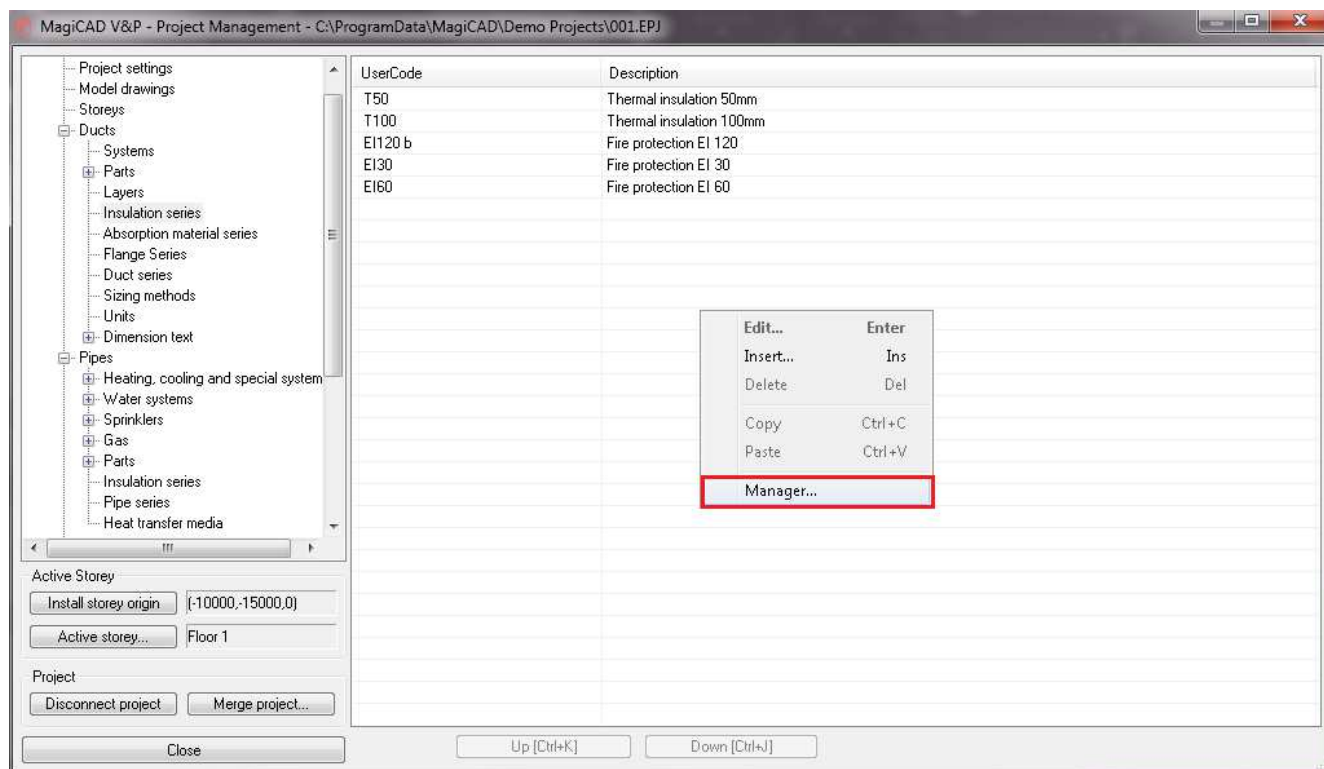




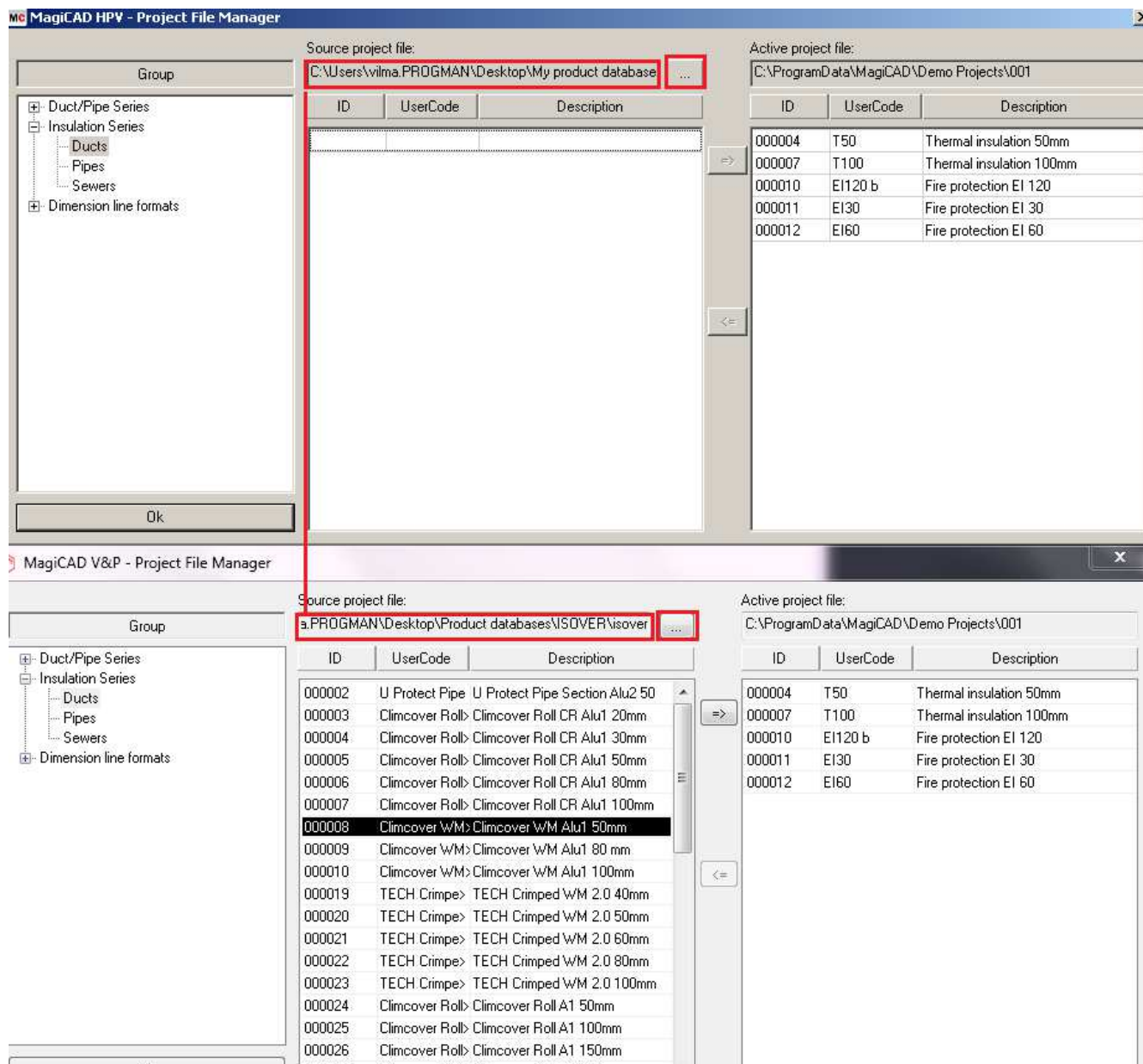
Another way to add insulation series to the project is to use *Manager...* function.

Start MagiCAD, open the project management window, and choose *Duct insulation series* from the left part of the window.

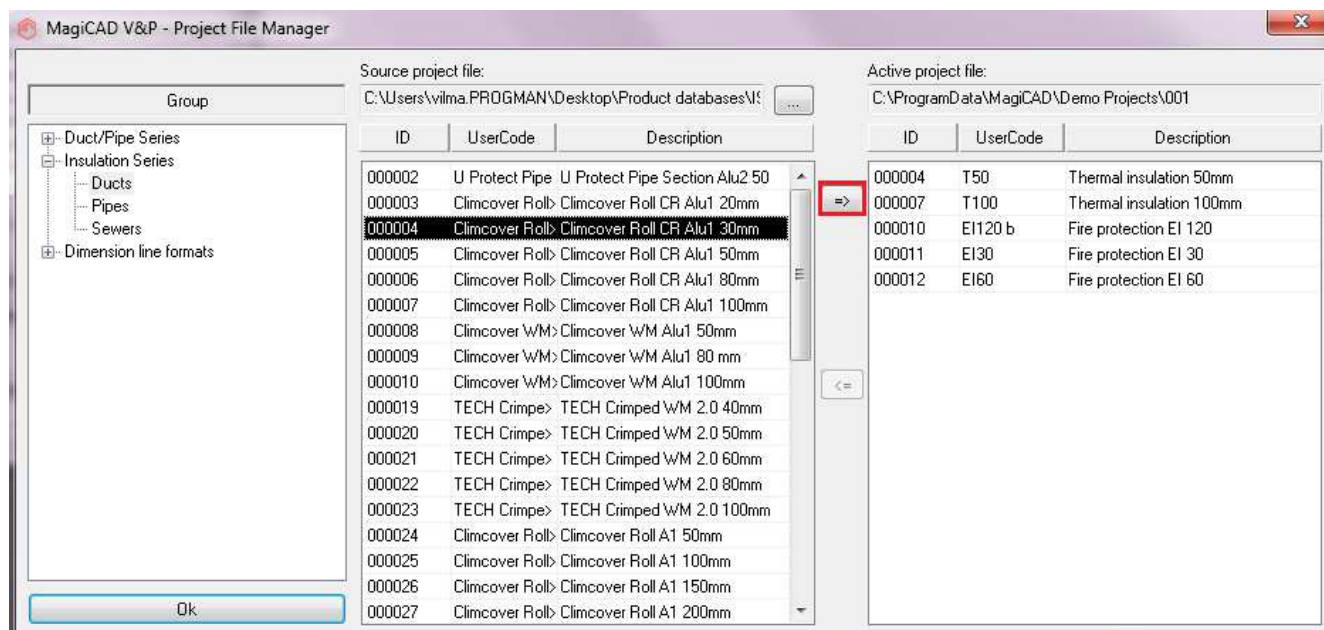
Click the right button of your mouse and choose *Manager*.



Change the source project file to Saint-Gobain_Isover.EPJ.



Choose needed insulation series (or all) and add it to your project file.



New duct insulation series are added to the current project file and can be used in the drawing.

